

Leakage detectors

For the detection of conductive liquids

Plate electrodes and cable electrodes

For signalling the presence of a conductive liquid caused, for example, by a burst pipe.

Plate and cable electrodes can, for example, be used on normally dry floors or false ceilings or in normally dry pipeline and cable ducts.

Cable electrodes can also be used alongside pipes or in dry double-pipe systems.

If the two electrode plates of a plate electrode or the two sensor cables of a cable electrode come into contact with a conductive liquid (e.g. water, acid etc.), an electrical contact is made and an alarm signal given.

Leakage detectors for conductive and non-conductive liquids also available. See p. 14.

Ex versions also available. Detailed information on request.

PE, PE-Z10, PEK and PEK-Z10 plate electrodes

These leakage detectors are also available in versions for direct connection to a PLC, a small-scale control system, a DDC controller or a field bus coupling element. Detailed information on request.



PE or PE-Z10,
sensor side

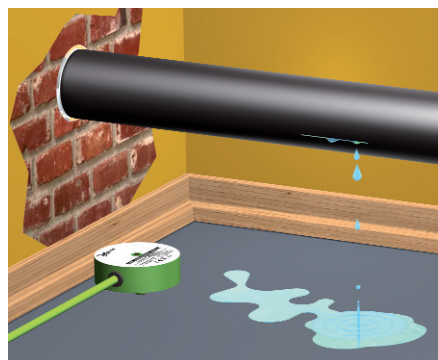


PE-Z10,
connection side



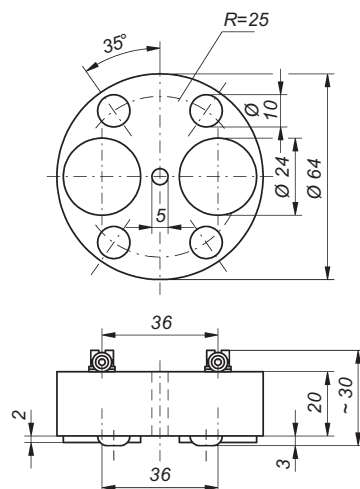
PEK-Z10

Application example

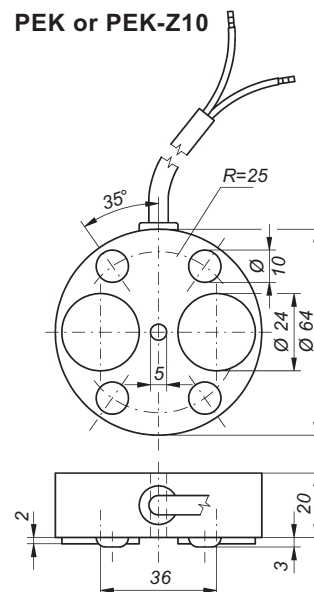


Use of a plate electrode for leakage detection on a floor

PE or PE-Z10



PEK or PEK-Z10



Technical data	PE	PE-Z10	PEK	PEK-Z10
Design	1 control electrode and 1 earth electrode			
Sensitive elements	2 electrode plates made of stainless steel 316 Ti, each with 24 mm dia.			
Housing	PP and cast resin			
Electrical connection	screw-type / crimp connection		connecting cable 2 x 0.75, length 2 m, on request: longer cable, halogen-free connecting cable	
Temperature range	– 20°C to + 60°C, higher temperatures on request			
Cable break monitoring	without	with	without	with
	integrated Z10 cable break monitoring unit			
Max. length of connecting cable between last electrode and electrode relay	1,000 m			

The PE and PEK plate electrodes may only be connected to the Leckstar 5 electrode relay.

Only one PE-Z10 or one PEK-Z10 plate electrode or a plate electrode combination consisting of one or more PE + one PE-Z10 or consisting of one or more PE + one PEK-Z10 may be connected to the Leckstar 101 electrode relay. The connection must be made as shown in the circuit diagrams on page 13.