



SECTION INSULATOR

–30 %
REDUCTION IN
INSTALLATION COST
SHORT
LENGTH

KUSEC 1500 V, 15 kV, 25 kV

This innovative section insulator has been newly developed by Kummler+Matter. The runners consist entirely of highly wear-resistant copper-magnesium contact wire. Thanks to **this new design**, the insulator stays flat throughout the full length. This

allows the pantograph to travel smoothly across the entire length of the component. **Maintenance intervals can be extended significantly** by using elevated, non-traversed insulators. The anchor clamp – an additional development by

Kummler+Matter – **makes it very simple to install the complete section insulator** and adjust its height. With its short overall length, the section insulator can be installed at almost any desired location in the contact line.

Kummler+Matter

RAILWAY SECTION INSULATOR 25 kV AC

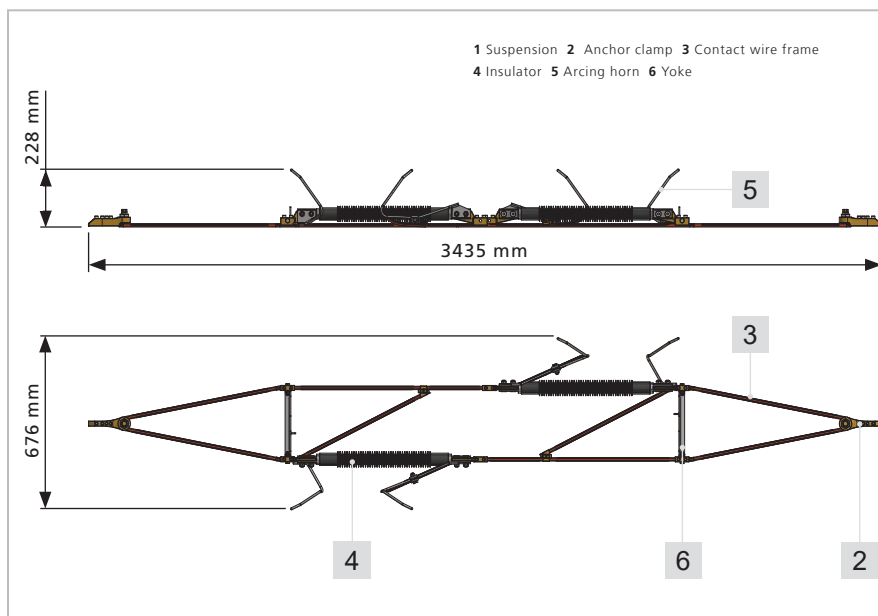
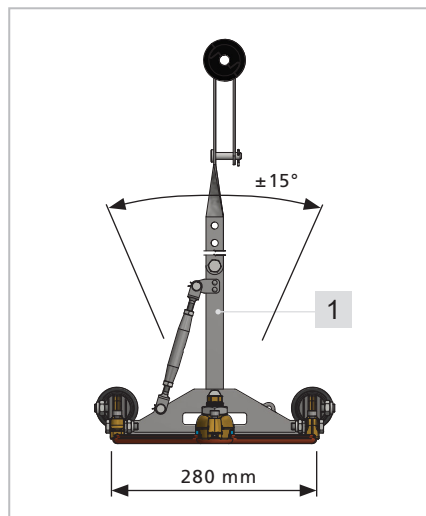
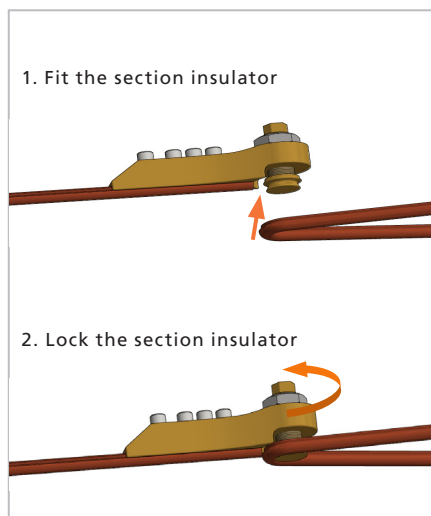
Article no. B1552-01

FAST INSTALLATION ON SITE

In case of a product change, the entire section insulator can be exchanged in next to no time thanks to the patented connector clamps with their unique installation system.

SIMPLE HEIGHT ADJUSTMENT

The KUSEC 25 can be very easily adjusted to the desired height with two perforated suspension plates. The inclination is adjusted with the help of turnbuckles.



YOUR ADVANTAGES AT A GLANCE

- ✓ -30 % Reduction in installation cost
- ✓ Short overall length of 3.5 m

- ✓ Application for fixed and auto-tensioned systems
- ✓ Fast changeover thanks to patented anchor clamps
- ✓ Bi-directional use
- ✓ Re-usable anchor clamps
- ✓ Non-traversed insulators
- ✓ Designed for high speeds

SPECIFICATIONS

- ✓ Height: 500–2000 mm
- ✓ Weight: 22 kg
- ✓ Operating voltage: up to 25 kV AC
- ✓ Arc extinguishing capacity: 25 kV / 1500 A / 2 seconds
- ✓ Short-circuit resistance: 40 kA / 100 ms
- ✓ Contact wire cross-section: 100–150 mm²
- ✓ Designed for nominal forces of up to 35 kN
- ✓ Breaking load: Min. 69.87 kN

TEST AND STANDARDS

- ✓ EN 50119, IEC 60913

RAILWAY SECTION INSULATOR 15 kV AC

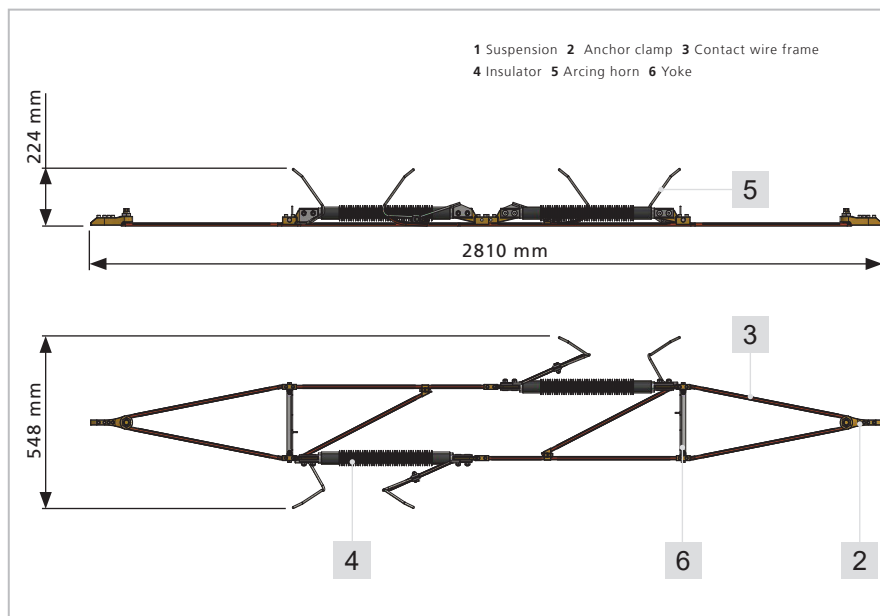
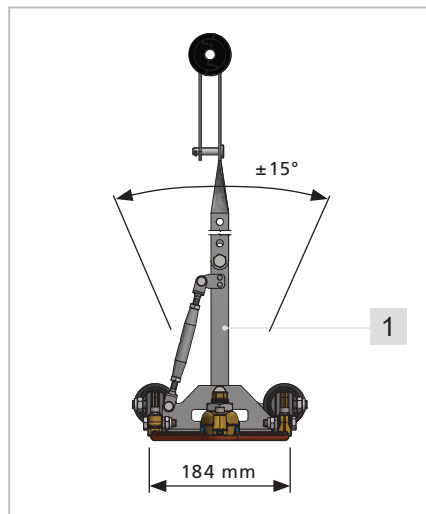
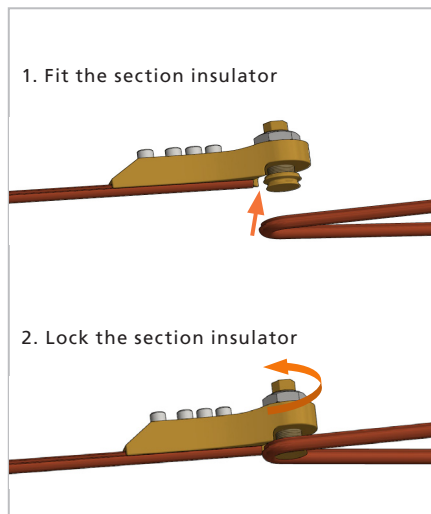
Article no. B1569-01

FAST INSTALLATION ON SITE

In case of a product change, the entire section insulator can be exchanged in next to no time thanks to the patented connector clamps with their unique installation system.

SIMPLE HEIGHT ADJUSTMENT

The KUSEC 15 can be very easily adjusted to the desired height with two perforated suspension plates. The inclination is adjusted with the help of turnbuckles.



YOUR ADVANTAGES AT A GLANCE

- ✓ -30 % Reduction in installation cost
- ✓ Short overall length of 2.8 m

- ✓ Application for fixed and auto-tensioned systems
- ✓ Fast changeover thanks to patented anchor clamps
- ✓ Bi-directional use
- ✓ Re-usable anchor clamps
- ✓ Non-traversed insulators
- ✓ Designed for high speeds

SPECIFICATIONS

- ✓ Height: 500–2000 mm
- ✓ Weight: 19 kg
- ✓ Operating voltage: up to 15 kV AC
- ✓ Arc extinguishing capacity: 15 kV / 1500 A / 2 seconds
- ✓ Short-circuit resistance: 40 kA / 100 ms
- ✓ Contact wire cross-section: 100–150 mm²
- ✓ Designed for nominal forces of up to 27 kN
- ✓ Breaking load: Min. 55.51 kN

TEST AND STANDARDS

- ✓ EN 50119, IEC 60913

TRAMWAY SECTION INSULATOR 1500 VDC

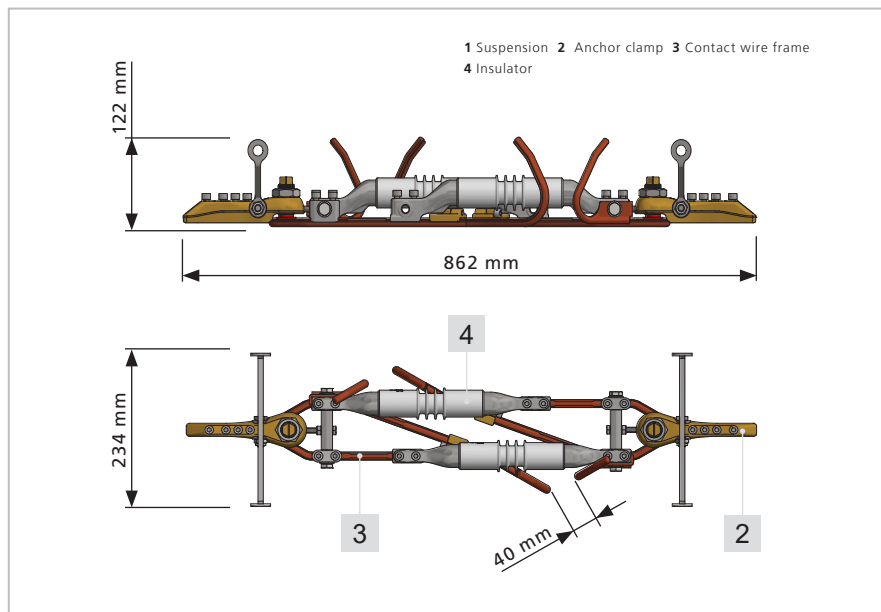
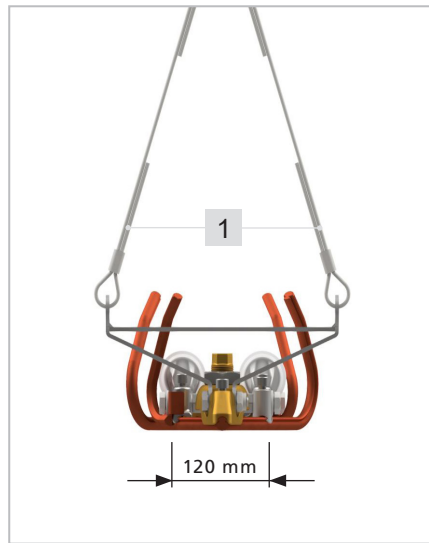
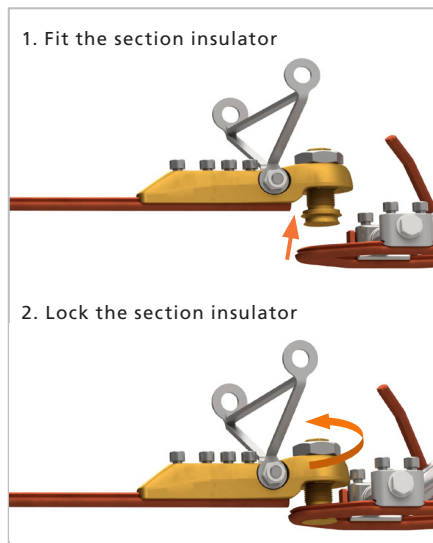
Article no. B1574-01

FAST INSTALLATION ON SITE

In case of a product change, the entire section insulator can be exchanged in next to no time thanks to the patented connector clamps with their unique installation system.

SIMPLE HEIGHT ADJUSTMENT

With the help of hanger wires (1), it is very easy to adapt the KUSEC 1500V to the on-site conditions, and to install and adjust it.



YOUR ADVANTAGES AT A GLANCE

- ✓ -30% Reduction in installation cost
- ✓ Short overall length of 862 mm

- ✓ Application for fixed and auto-tensioned systems
- ✓ Fast changeover thanks to patented anchor clamps
- ✓ Bi-directional use
- ✓ Re-usable anchor clamps
- ✓ Non-traversed insulators

SPECIFICATIONS

- ✓ Weight: 7.5 kg
- ✓ Operating voltage: up to 1500 V DC
- ✓ Arc extinguishing capacity: 1500 V / 1500 A / 2 seconds
- ✓ Short-circuit resistance: 10 kA / 500 ms
- ✓ Contact wire cross-section: 100–150 mm²
- ✓ Designed for nominal forces of up to 18 kN
- ✓ Breaking load: Min. 49.91 kN

TEST AND STANDARDS

- ✓ EN 50119, IEC 60913
- ✓ International patent PCT/EP2018/068607 pending

Kummler+Matter Ltd
Rietstrasse 14
CH-8108 Dällikon

T +41 44 247 47 47
F +41 44 247 47 77
info.zuerich@kuma.ch

kuma.ch

