



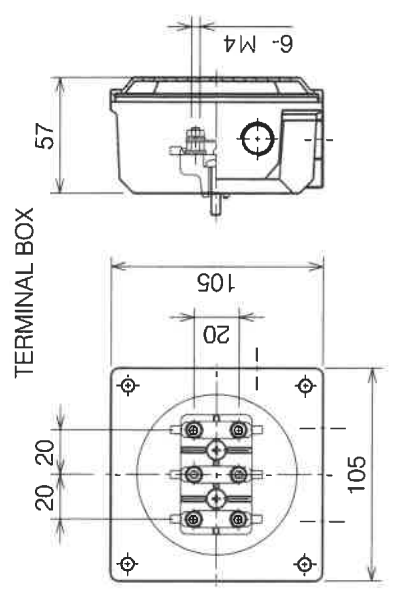
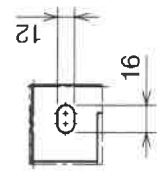
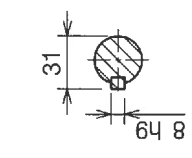
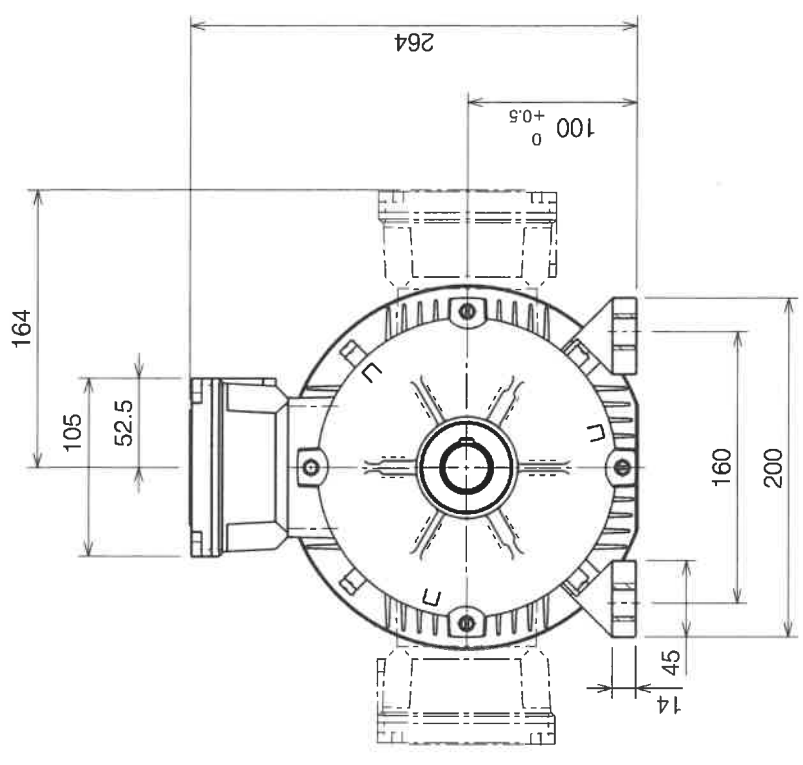
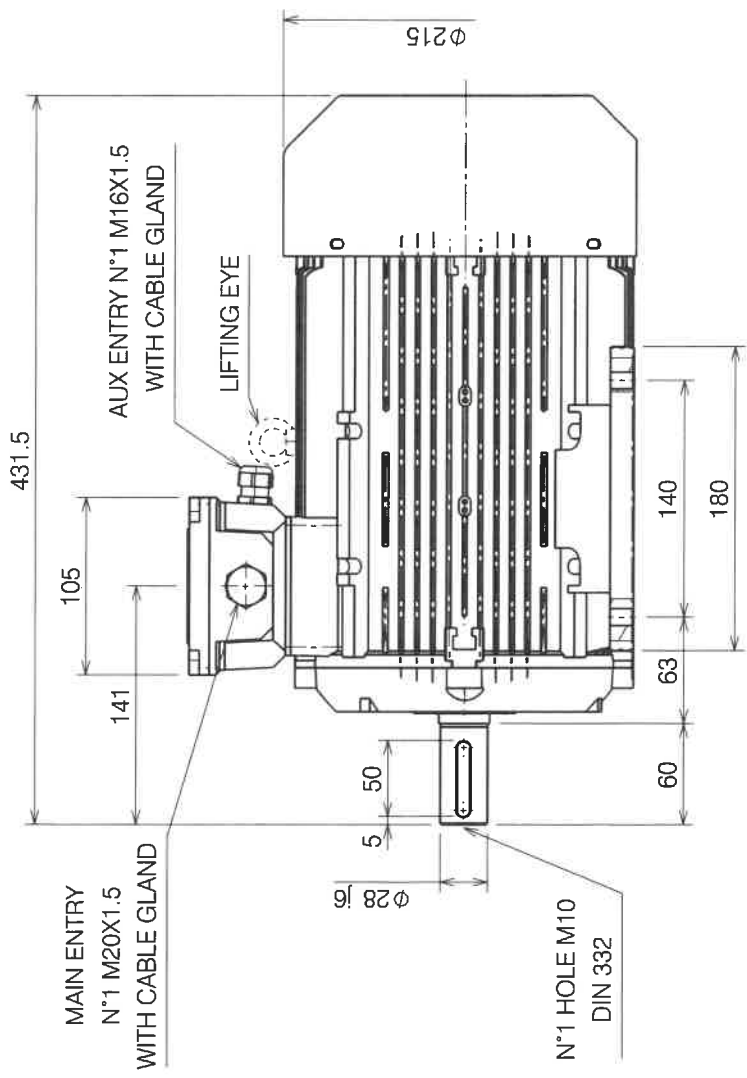
MarelliMotori
Inspired solutions

MOTOR TYPE		A3C 100 LB4
RATED POWER	kW	3
EFFICIENCY CLASS (IEC 60034-30-1)		IE3
DUTY		S1
RATED VOLTAGE	V	400 Y
RATED FREQUENCY	Hz	50
RATED CURRENT	A	6
RATED SPEED	rpm	1450
MOUNTING	IM	HORIZONTAL
EXECUTION		TEFC
ATEX EXECUTION		-
PROTECTION DEGREE	IP	55
COOLING METHOD	IC	411
MOMENT OF INERTIA [J=WD ² /4]	kgm ²	0.016
AMBIENT TEMPERATURE	°C	40
SITE ALTITUDE		1000
CLASSIFICATION		-
INSULATION CLASS		F
TEMPERATURE RISE		B
APPLICABLE STANDARDS		IEC 60034

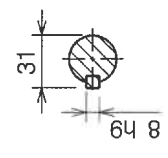
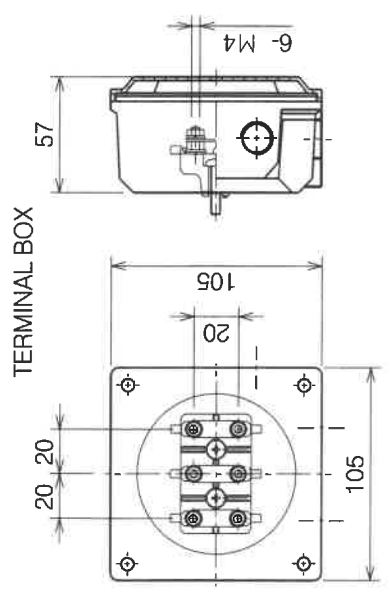
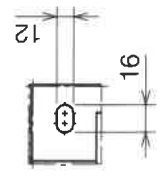
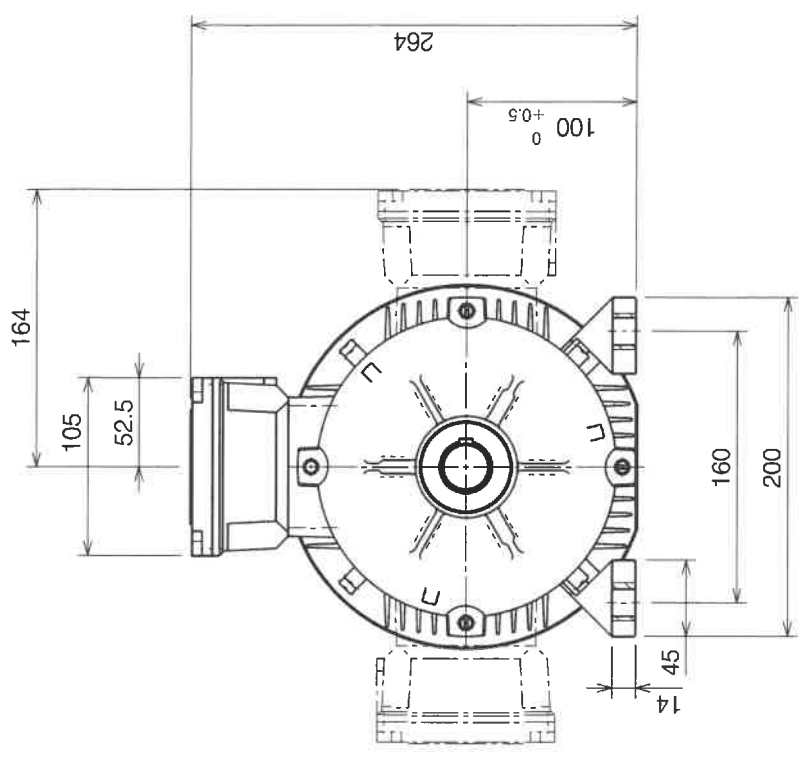
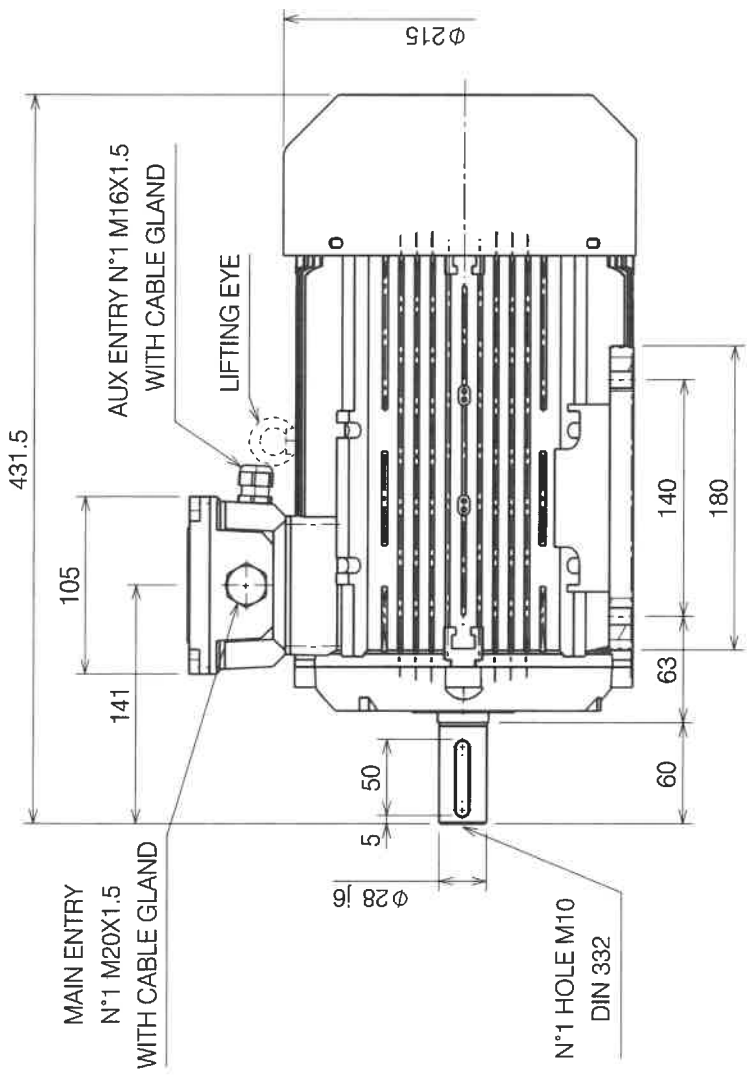
		LOAD		
		4/4	3/4	2/4
EFFICIENCY	%	87.7%	88.4%	87.6%
POWER FACTOR		0.82		
TORQUE	FULL LOAD	Nm	20	
	LOCKED ROTOR (DOL)	p.u.	2.3	
	PULL-OUT (DOL)	p.u.	2.65	
LOCKED ROTOR CURRENT (DOL)		p.u.	7.6	
STARTING METHOD			DOL	
THERMAL PROTECTIONS	WINDINGS		-	
	BEARINGS		-	
HEATING ELEMENTS	V / W		-	

MECHANICAL DATA

BEARING TYPE	D-end		6206-ZZ
	N-end		6206-ZZ
LUBRICATION			-
DIRECTION of ROTATION			CW or CCW
NO LOAD NOISE		dB(A)	60
WEIGHT		kg	28
VIBRATION LEVEL			A
PAINTING			RAL 5010



A3C 100 LA-LB B3



A3C 100 LA-LB B3