

Locating Pin

20 mm Diameter x 15 mm High Diamond Head



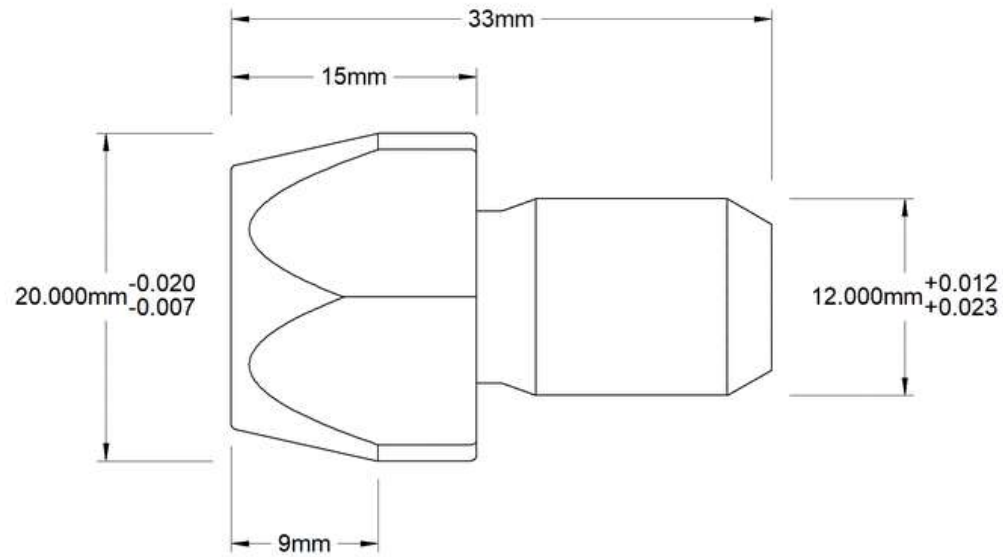
Delivers Thursday


\$12.70 each
2336A124

Material	Steel
Locating Pin Head Type	Diamond
Head	
Diameter (A)	20 mm
Height (B)	15 mm
End Height	9 mm
Shank Diameter (C)	12 mm
Overall Height	33 mm
Tolerance	
Head Diameter	-0.02 mm to -0.007 mm
Shank Diameter	0.012 mm to 0.023 mm
Hardness	Rockwell C54
Specifications Met	DIN 6321
Installation Permanence	Permanent
Mount Type	Press Fit
System of Measurement	Metric
Country of Origin	Germany
DFARS Compliance	Specialty Metals COTS-Exempt
Export Control Classification Number (ECCN)	EAR99
REACH Compliance	REACH (EC 1907/2006) (06/25/2025, 250 SVHC) Compliant
RoHS Compliance	RoHS 3 (2015/863/EU) Compliant
Schedule B Number	846620.8065
U.S.–Mexico–Canada Agreement (USMCA) Qualifying	No

Install these pins in a plate or table and mate with holes in a workpiece for precise alignment. Press the shank into a drilled hole for permanent installation.

Diamond Head—Diamond-head pins make less contact with the inside of a hole than round-head pins to reduce sticking and jamming.



McMASTER-CARR 	PART NUMBER	2336A124
http://www.mcmaster.com © 2026 McMaster-Carr Supply Company		Locating Pin
<small>Information in this drawing is provided for reference only.</small>		

The information in this 3-D model is provided for reference only.