

LTHS320

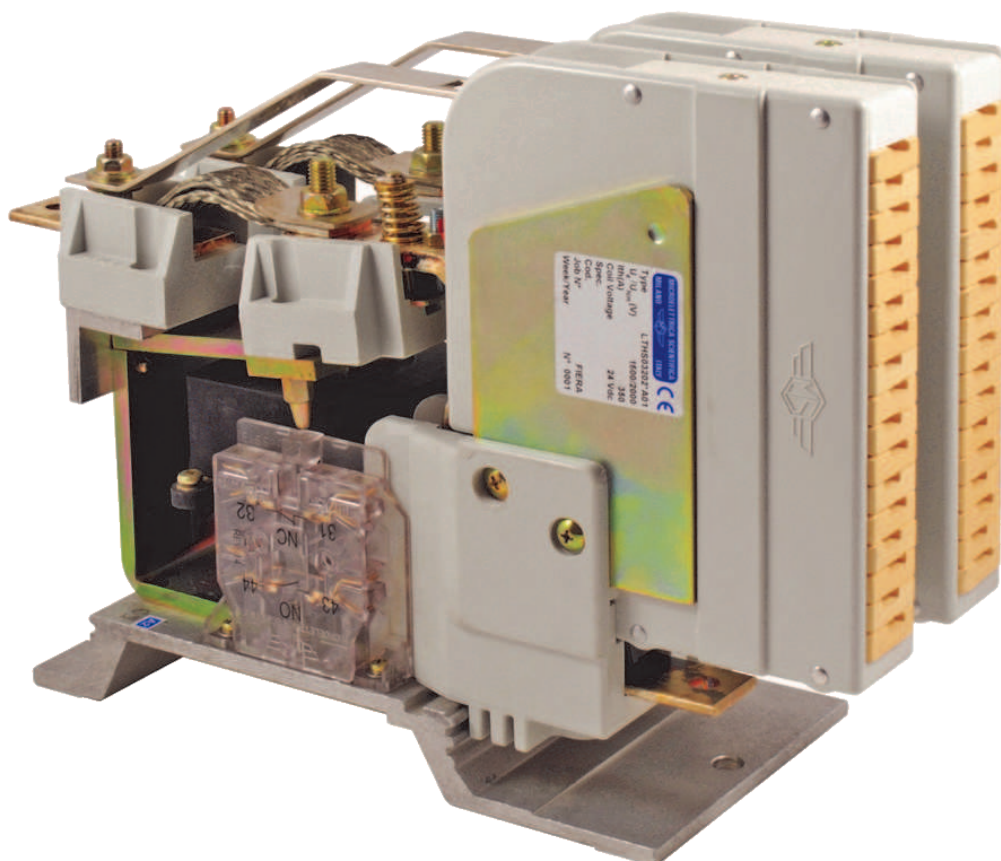
Spare parts manual - 2 Pole

Issued by: Aftermarket.

Catalogue Number: 09LTHS32002ST

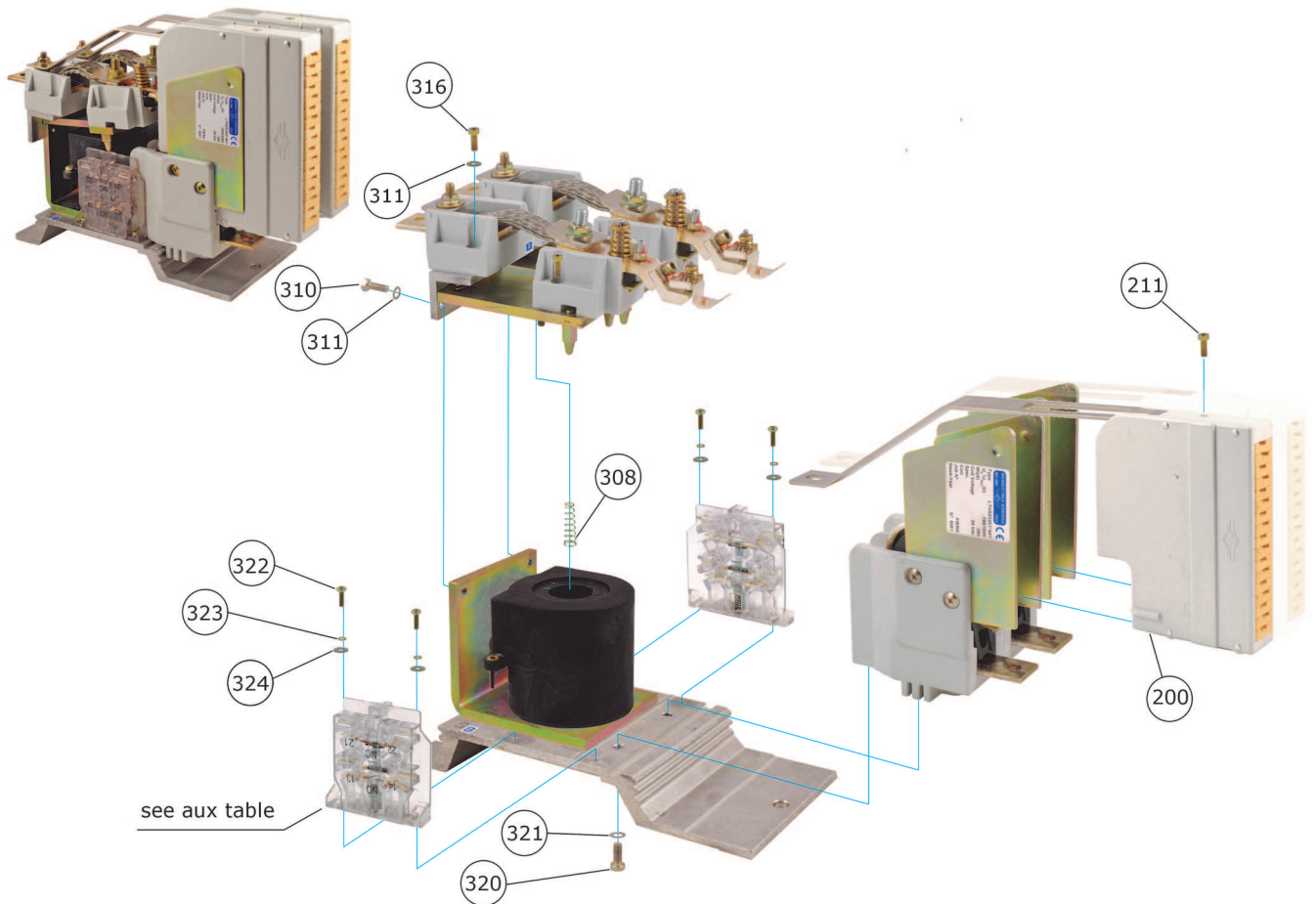
Rev.02

Date: Dicembre 09 / December 09



Microelettrica Scientifica

Tavola 1 - Table 1



#	Descrizione - Description	PN	QTY
200	Caminetto + Staffa - Arc Chute + bracket	8640031/1	2
211	Vite M4 X 12 - Screw M4 X 12	0510029	2
308	Molla - Compression Spring	0288170	1
310	Vite M5X14 - Spring M5X14	0500054	2
311	Rosetta di sicurezza D.5 SCHNORR - Washer D.5 SCHNORR	0594007	12
320	Vite M6X12 - Screw M6X12	0510077	2
321	Rosetta di sicurezza D.6 SCHNORR - Washer D.6 SCHNORR	0594008	2
322	Vite (croce) M3X10 - Screw M3X10	0513029	4
323	Rosetta D.3X9 - Flat washer D.3X9	0590027	4
324	Rosetta di sicurezza.D.3 SCHNORR - Washer .D.3 SCHNORR	0594004	4

Tavola 2 - Table 2

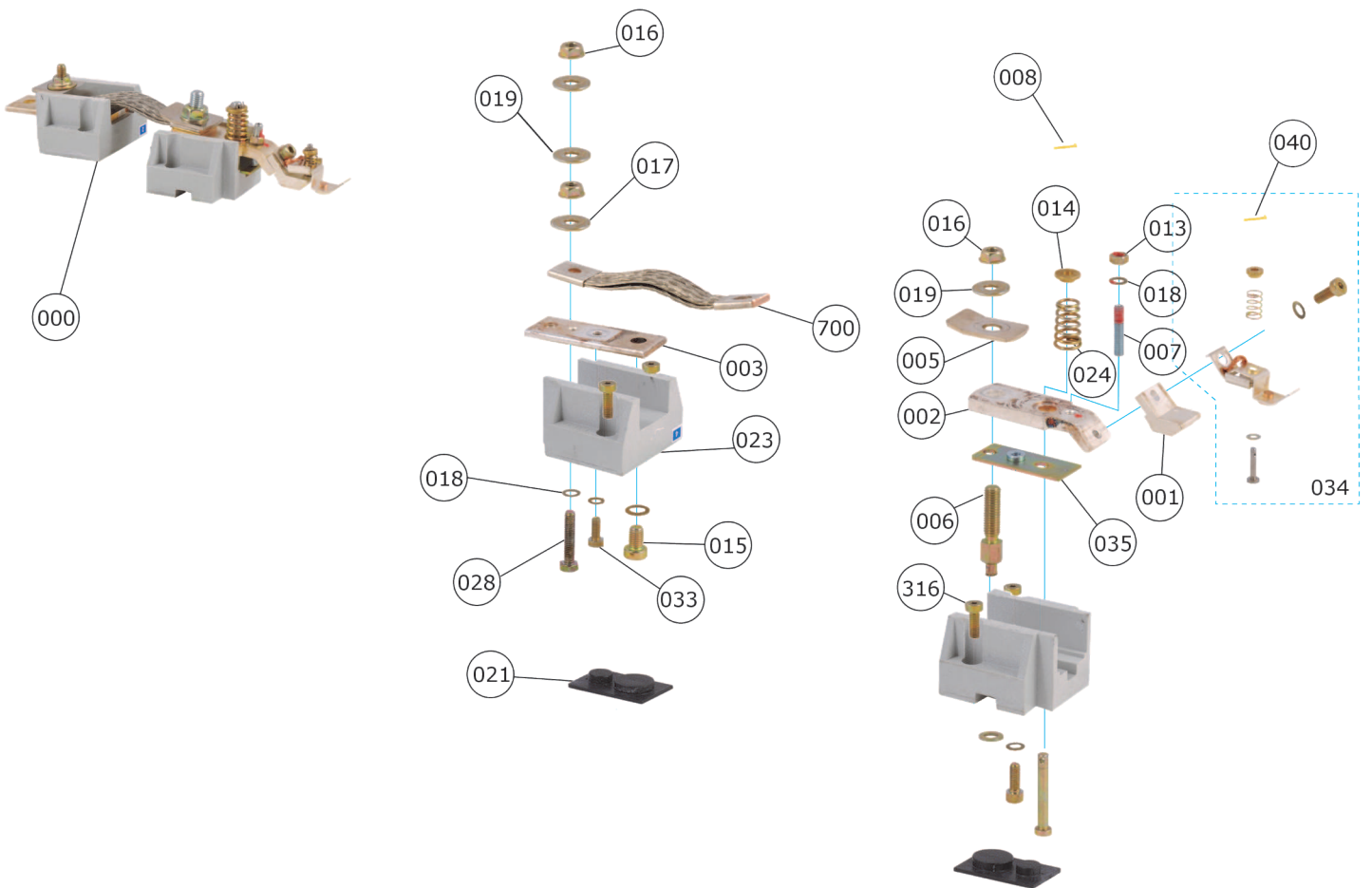
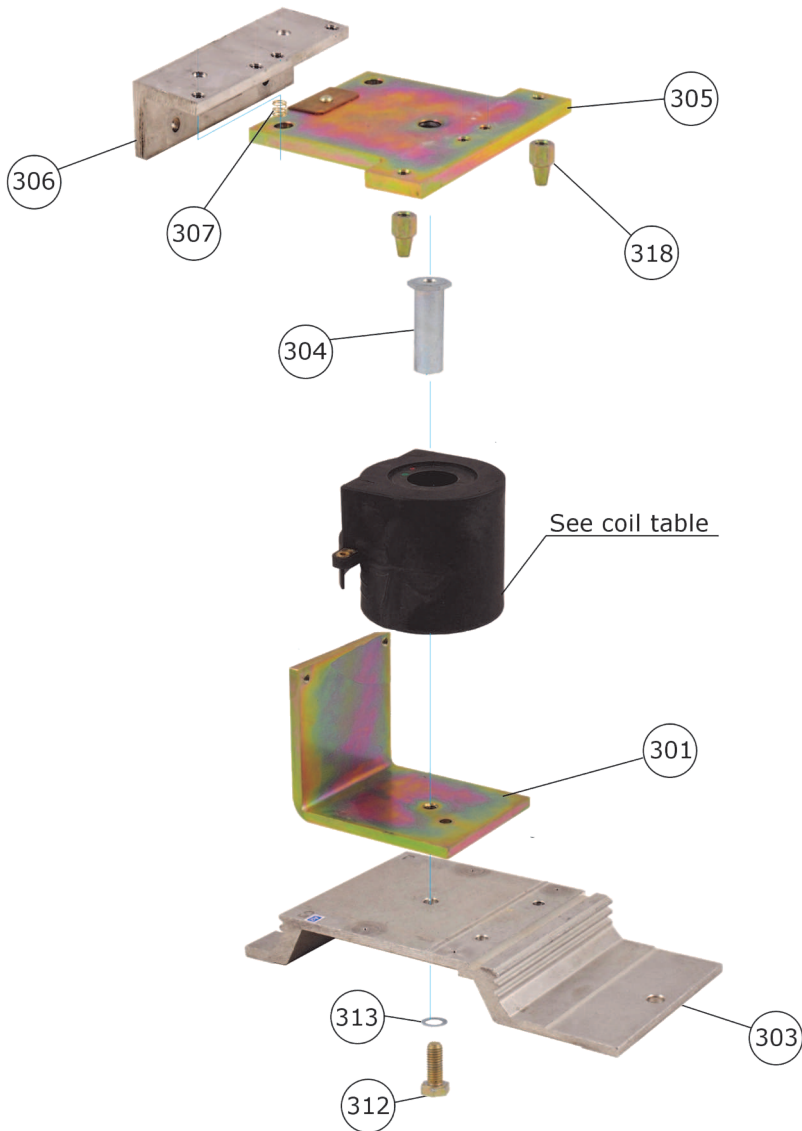


Tavola 2.1 - Table 2.1

#	Descrizione - Description	PN	QTY
000	Polo mobile con arco - Moving poles with arching contact	8510548	2
001	Contatto mobile - Moving tip	0100093/S6 *	2
002	Porta contatto mobile - Moving contact base	0106167	2
003	Attacco inferiori - Lower attachment	0207934	2
005	Copri treccia - Braid cover	0135008	2
006	Perno - Moving pole pin	0213499	2
007	Vite speciale - Special screw	0217839	2
008	Copiglia - Split pin	0620010	2
013	Dado M5 - Nutt M5	0580033	2
015	Rosetta di sicurezza D.8 SCHNORR - Washer D.8 SCHNORR	0594009	2
016	Dado M8 - Nutt M8	0582006	2
017	Rosetta D.6X18X1,6 - Flat washer D.6X18X1,6	0591002	6
018	ROSETTA DI SICUREZZA D.5 SCHNORR - Washer D.5 SCHNORR	0594007	8
019	Rosetta D6X12,5X1,6 - Flat washer D6X12,5X1,6	0590007	2
021	Coperchio supporto polo mobile - Moving pole cover	1366709	4
023	Supporto terminale uscita - Output terminal support	1387871	2
024	Molla - Pressure spring	0282159/S	2
028	Vite M6X30 - Screw M6X30	0500085	2
033	Vite M5X12 - Screw .M5X12	0511028	4
034	Gruppo contatto d'arco mobile - Moving arching contact group	0138214/S6 *	2
035	Piastrina - Plate	0118048	2
014	Boccola - Bush	0233962	2
008	Copiglia - Split pin	0620010	2
316	Vite M5X14 - Screw M5X14	0511029	6
700	Treccia porta corrente - Braid group	8590037	2

Tavola 3 - Table 3



#	Descrizione - Description	PN	QTY
301	Nucleo fisso - Base plate	02111051	1
303	Staffa - Fixing plate	0229071	1
304	Nucleo centrale - Central core	0217928	1
305	Nucleo mobile - Mobile core	0118215	1
306	Cerniera - Bracket	0127922	1
307	Molla - Spring	0281745	2
312	Vite M8X20 - Screw M8X20	0500106	1
313	Rosetta di sicurezza D.8 SCHNORR - Washer D.8 SCHNORR	0594009	1
318	Inserto Filettato - Threaded pin	02112434	2

Tavola 4 - Table 4

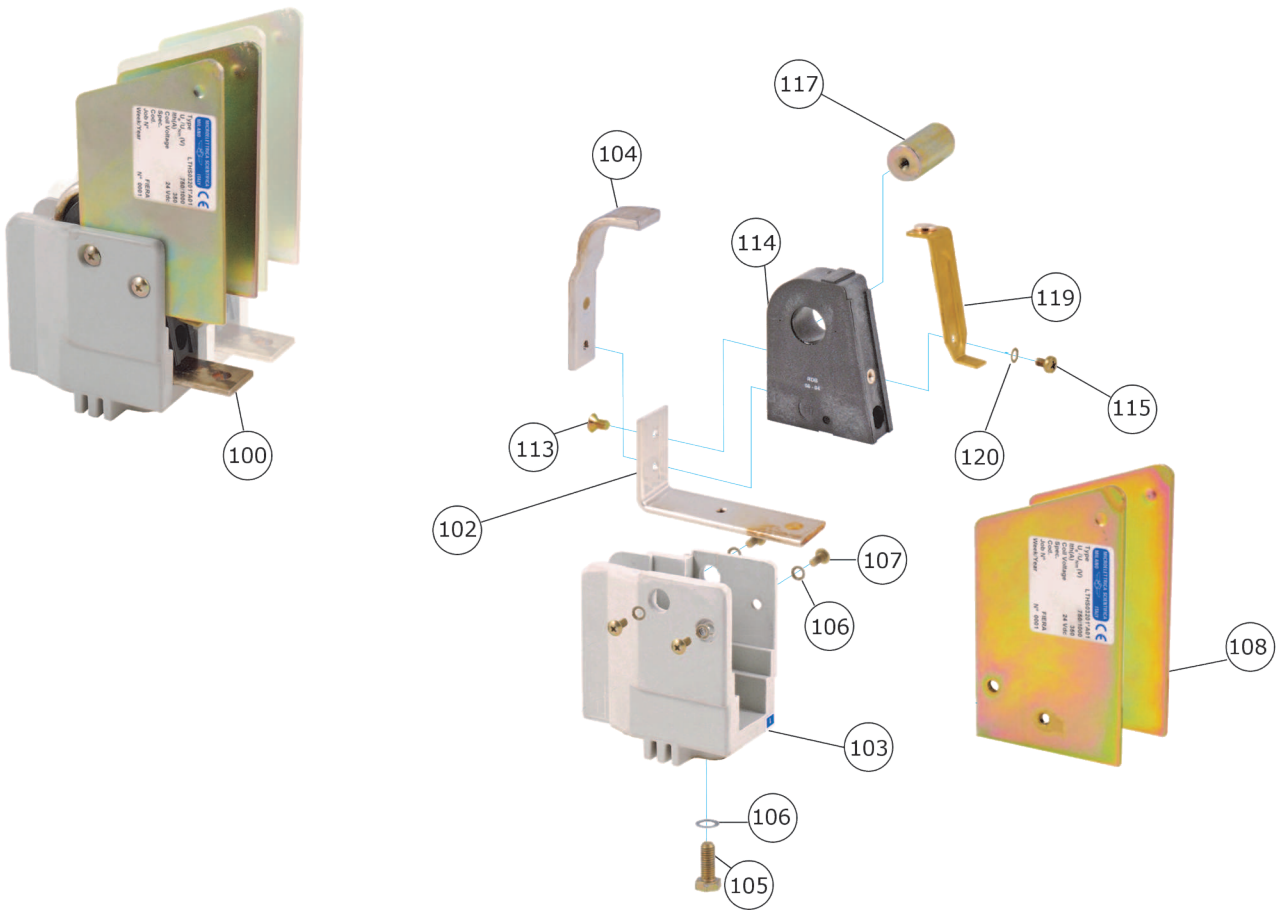
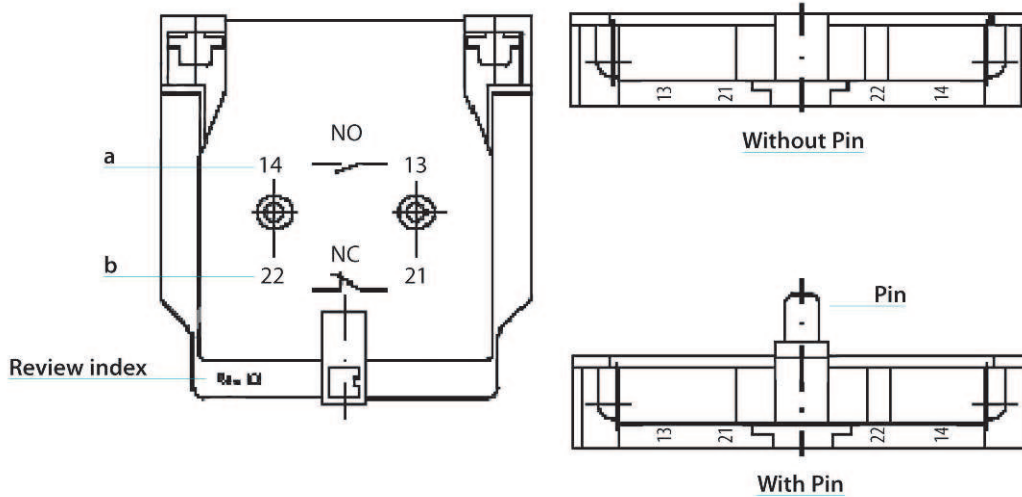


Tavola 4.1 - Table 4.1

#	Descrizione - Description	PN	QTY
100	Polo fisso - Fixed pole with arching contact	8500552	2
102	Porta contatto fisso - Bracket	02012437	2
103	Supporto polo fisso - Fixed pole support	1387927	2
104	Contatto fisso - Fixed tip	0100108/S6*	2
105	Vite M5X12 - Screw M5X12	0511028	2
106	Rosetta di sicurezza D.5 SCHNORR - Washer D.5 SCHNORR	0594007	10
107	Vite M5 X 6 - Screw M5 X 6	0217608	4
108	Espoansione polare destra - Right pole cover	0118404/D	2
113	Vite M5X8 - Screw M5X8	0522077	2
114	Bobina di soffio - Blow out coil group	8583150	2
115	Vite M4X6 - Screw M4X6	0513051	2
117	Nucleo bobina di soffio - Blow out coil core	0217208	2
119	Gruppo contatto d'arco fisso - Fixed arching contact group	0138897/S6*	2
120	Rosetta di sicurezza D.4 SCHNORR - Washer D.4 SCHNORR	0594006	2
122	Espoansione polare sinistra - Left pole cover	0118404/S	2

Tavola aux. - Aux. Table



1 NO + 1 NC

AAux. Switch with faston			Aux. Switch with screws					PIN		Mounting side on contactor	Spring	
silver	rev	gold	silver	rev	gold	a	b	yes	no		yes	no
2440427	14	2440427/D	2440427/V	14	2440427/DV	13-14	21-22	x		Left	x	
2440428	14	2440428/D	2440428/V	14	2440428/DV	43-44	31-32	x		Right	x	
2440429	14	2440429/D	2440429/V	14	2440429/DV	53-54	61-62	x		Left	x	
2440430	14	2440430/D	2440430/V	14	2440430/DV	83-84	71-72	x		Right	x	
2440431	14	2440431/D	2440431/V	14	2440431/DV	13-14	21-22		x	Left	x	
2440432	14	2440432/D	2440432/V	14	2440432/DV	43-44	31-32		x	Right	x	
2440452	14	2440452/D	2440452/V	14	2440452/DV	13-14	21-22		x	Left		x
2440453	14	2440453/D	2440453/V	14	2440453/DV	43-44	31-32		x	Right		x
2440454	14	2440454/D	2440454/V	14	2440454/DV	53-54	61-62	x		Left		x
2440455	14	2440455/D	2440455/V	14	2440455/DV	83-84	71-72	x		Right		x

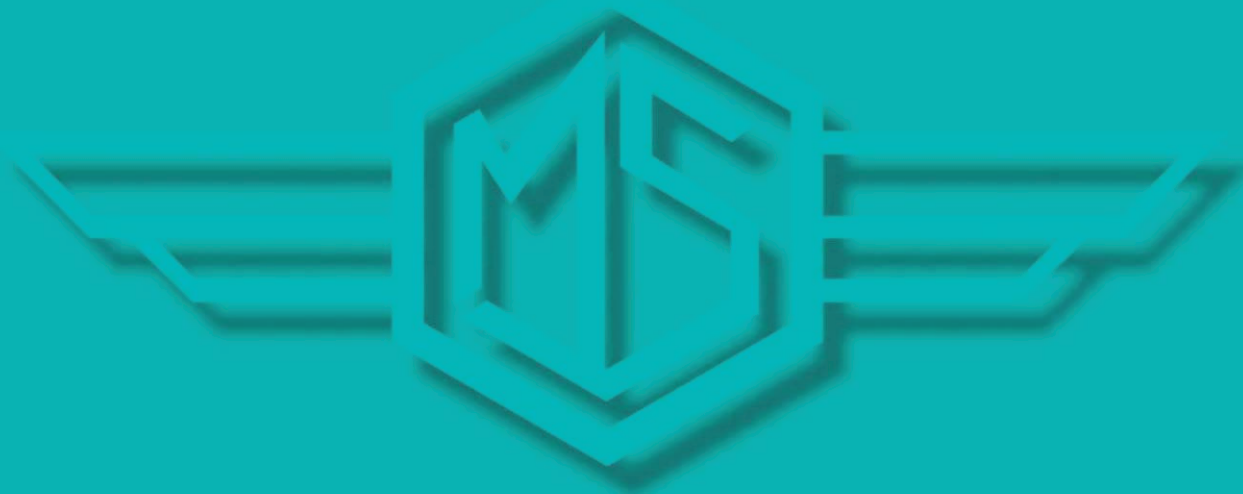
2 NO

Aux. Switch with faston			Aux. Switch with screws					PIN		Mounting side on contactor	Spring	
silver	rev	gold	silver	rev	gold	a	b	yes	no		yes	no
2440436	14	2440436/D	2440436/V	14	2440436/DV	13-14	23-24	x		Left	x	
2440437	14	2440437/D	2440437/V	14	2440437/DV	43-44	33-34	x		Right	x	
2440438	14	2440438/D	2440438/V	14	2440438/DV	13-14	23-24		x	Left	x	
2440439	14	2440439/D	2440439/V	14	2440439/DV	43-44	33-34		x	Right	x	
2440450	14	2440450/D	2440450/V	14	2440450/DV	13-14	23-24		x	Left		x
2440451	14	2440451/D	2440451/V	14	2440451/DV	43-44	33-34		x	Right		x
2440457	14	2440457/D	2440457/V	14	2440457/DV	53-54	63-64	x		Left		x
2440458	14	2440458/D	2440458/V	14	2440458/DV	73-74	83-84	x		Right		x

Tavola bobine - *Coil Table*

PN	Descrizione - <i>Description</i>
8580633	Bobina - Coil / 24 V
8580634	Bobina - Coil / 36 V
8580635	Bobina - Coil / 48 V
8580637	Bobina - Coil / 72 V
8580639	Bobina - Coil / 90 V
8580640	Bobina - Coil / 110 V
8580632	Bobina - Coil / 16 V
8580642	Bobina - Coil / 190 V
8580643	Bobina - Coil / 220 V





For information on sales
network and products please visit

www.microelettrica.com



KNORR-BREMSE