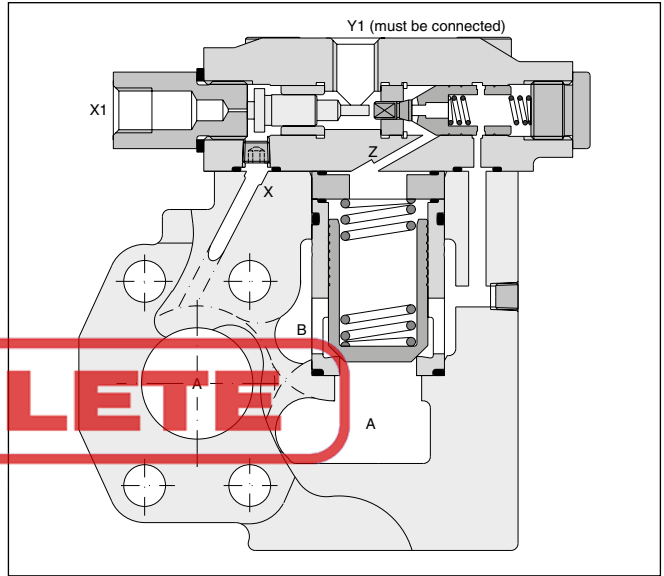
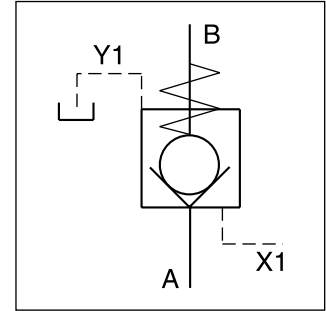


Characteristics / Ordering Code

Pilot operated check valves series C5P have a similar design to the subplate mounted C4V series. The SAE flanges allow to mount directly on the flanges of actuators to achieve a very compact design.

Features

- Pilot operated check valve
- 2-port body with SAE61 flange
- 3 sizes (SAE 3/4", 1", 1 1/4")
- 4 opening ratios
- Optional with position control



OBSOLETE

Ordering code

9

C5P

Pilot operated check valve

□

Nominal size

□ - □

SAE61 interface

8

Pilot ports X1 and Y1=G 1/4"

□

Opening ratio

□

Cracking pressure

A

Design series

□

Seals

□

Options

Code	Nominal size
06	3/4"
08	1"
10	1 1/4"

SAE61		
Code	Max. pressure	Size
4	280 bar	10 (SAE61)
5	350 bar	06/08 (SAE61)

Code	Opening ratio	Code	Opening ratio ¹⁾
1	1 : 1	E	1 : 1
3	3 : 1	F	3 : 1
8	8 : 1	G	8 : 1
9	10 : 1	H	10 : 1

Code	Options
omit	Standard
013	Position control with protection

Code	Seals
1	NBR
5	FPM

Code	Size	Flow A → B	Flow B → A
2	06	1.0 bar	1.5 bar
	08/10	1.0 bar	1.7 bar
4	06	4.0 bar	5.5 bar
	08/10	3.5 bar	6.0 bar
6	06	2.0 bar	3.0 bar
	08/10	2.2 bar	3.8 bar

¹⁾ Position control incl. amplifier for C5P08/10 only.

Technical Data / Position Control

General				06 (3/4")	08 (1")	10 (1 1/4")
Size				06 (3/4")	08 (1")	10 (1 1/4")
Mounting	2-port inline flange (SAE61)					
Mounting position	unrestricted					
Ambient temperature	[°C]			-20...+60		
MTTF _D value	[years]			150		
Weight	[kg]			3.9	4.4	5.7
Hydraulic						
Max. operating pressure	Ports A, B	[bar]		350	350	280
	Port Y1	[bar]		30	30	30
Nominal flow	[l/min]			180	360	600
Fluid	Hydraulic oil according to DIN 51524					
Fluid temperature	[°C]			-20...+70 (NBR: -25...+70)		
Viscosity, permitted	[cSt] / [mm ² /s]			20...400		
	recommended			30...80		
Filtration	ISO 4406 (1999); 18/16/13					

Position Control

Position control by proximity switch with amplifier.
The closed position is monitored.

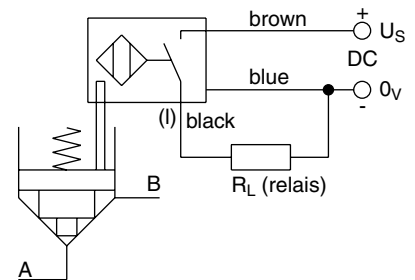
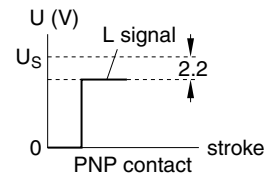
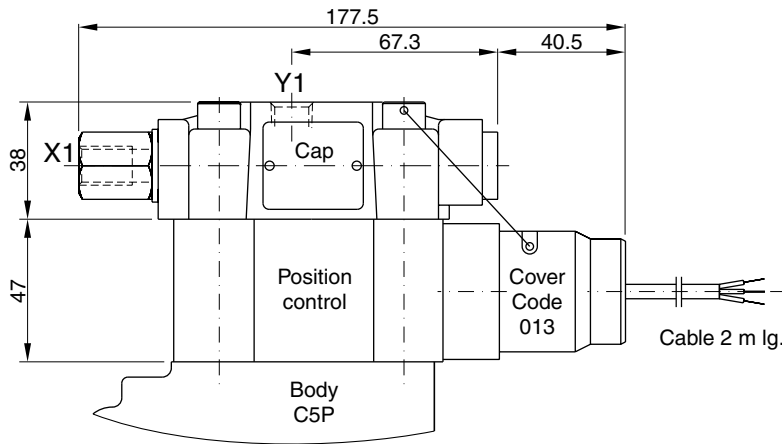
Valve open: proximity switch activated.

This proximity switch is pressure proof and has no wear-
ing parts.

Note: Position control for C5P08 and C5P10 only.

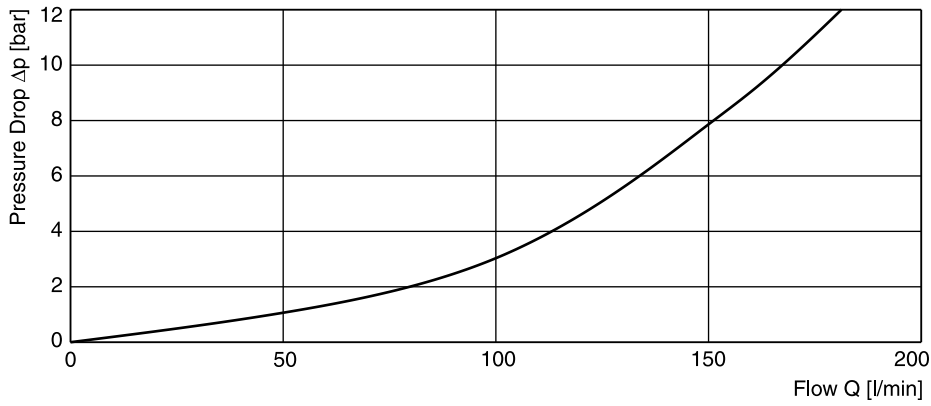
Technical data proximity switch

Function		PNP, contact
Supply voltage (U _s)	[VDC]	10...30
Supply voltage ripple	[%]	≤ 10
Current consumption	[mA]	max. 8
Residual voltage L-signal	[V]	U _s - 2.2 at I _{max}
Output current (I)	[mA]	≤ 200
Protection class		IP67
Ambient temperature	[C°]	-25...+70
Wire cross section	[mm ²]	3 x 0.5

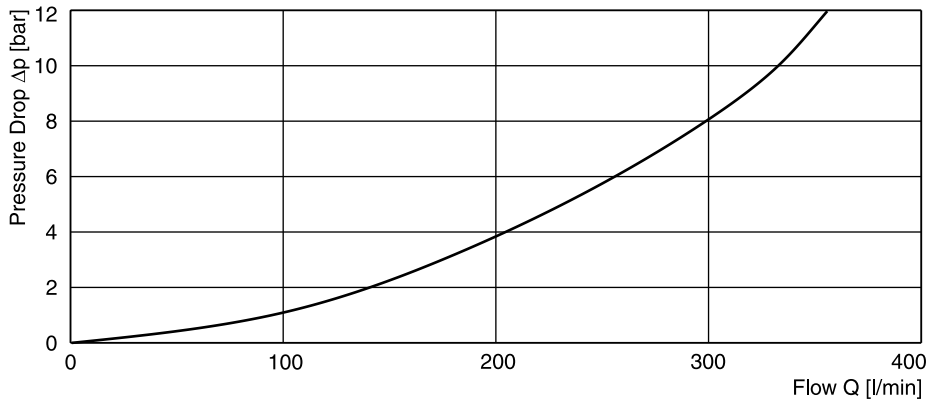


p/Q-performance curves

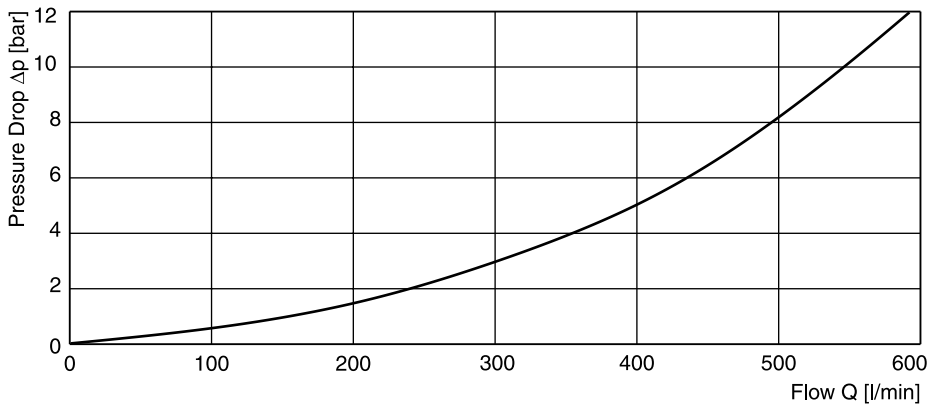
C5P06



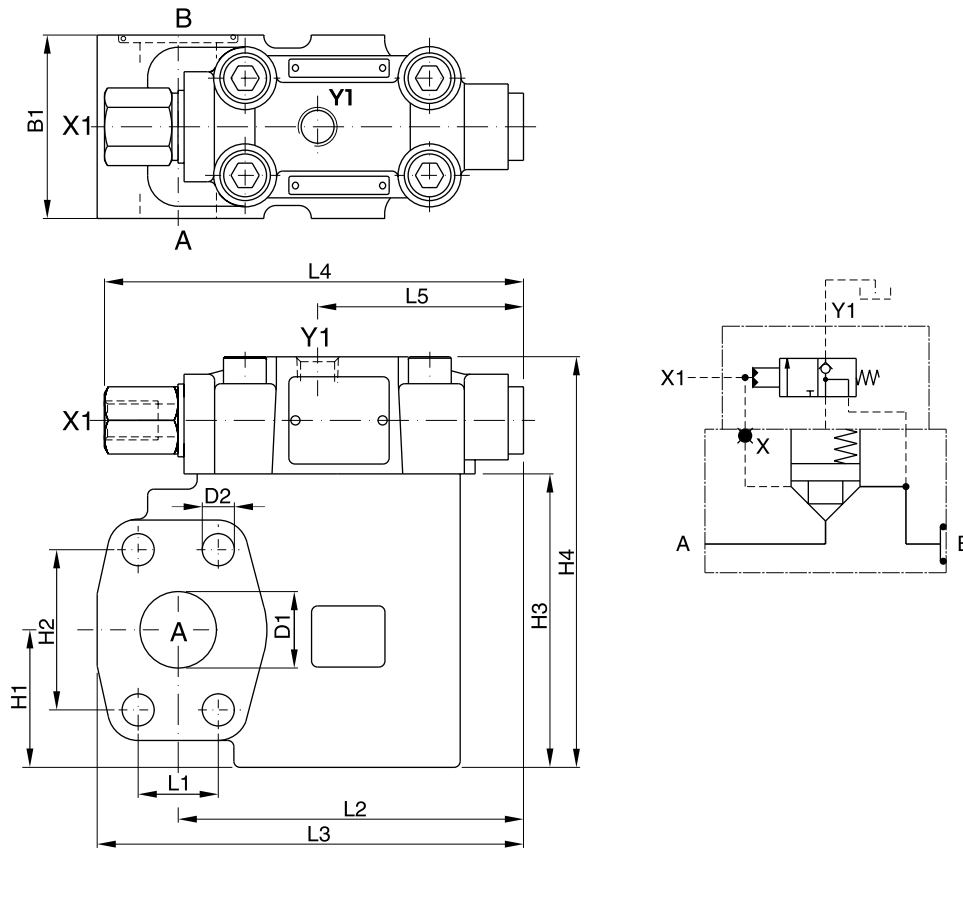
C5P08



C5P10



All characteristic curves measured with HLP46 at 50 °C.



Seal kits		
NG	NBR	FPM
06	S26-59404-0	S26-59404-5
08	S26-59405-0	S26-59405-5
10	S26-59406-0	S26-59406-5

Dimensions

Type	L1	L2	L3	L4	L5	B1	H1	H2	H3	H4	D1	D2
C5P06	22.2	95.8	119.8	137	67.3	60	37	47.6	90	128	19	10.5
C5P08	26.2	112.9	139.4	137	67.3	60	45	52.4	96	134	25	10.5
C5P10	30.2	112.9	146.9	137	67.3	75	48	58.7	109	147	32	12.5

Ports

Port	Function	Port size		
		C5P06	C5P08	C5P10
A	Inlet or outlet	¾" SAE61	1" SAE61	1¼" SAE61
B	Outlet or inlet	¾" SAE61	1" SAE61	1¼" SAE61
X1	External pilot port	G¼"	G¼"	G¼"
Y1	External pilot drain	G¼"	G¼"	G¼"