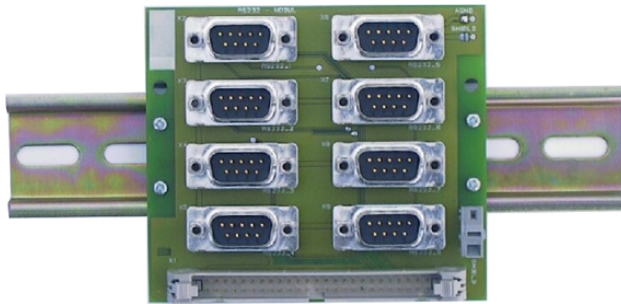
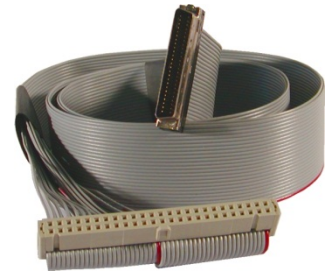


TPMC866-IO DIN Rail Mounting I/O Module (8x DB9) for TPMC866



TPMC866-IO-10R



TA105-10R

Application Information

The TPMC866-IO is a DIN Rail Mounting I/O module for the serial interface TPMC866 (versions with front panel access).

The TPMC866-IO supports all versions of the TPMC866 (RS232, RS422 and RS485 interfaces).

Eight DB9 male connectors are mounted on the module.

The TPMC866-IO supports TXD, RXD, RTS, CTS and GND for each of the eight serial channels of the TPMC866-10R (RS232).

TxD+/-, RxD+/-, GND are supported for the TPMC866-11R/-12R (RS422) and D_x+/-, GND for the TPMC866-12R (RS485).

Technical Information

- DIN Rail Mounting I/O module, 95 mm x 83 mm
- 8 DB9 male connectors
- Terminal point for shield of all DB9 connectors
- Supports front panel I/O versions of the TPMC866
- Cable TA105-10R, 0.8m ribbon cable with 50 pin ribbon cable connector and 50 pin SCSI-2 male connector, is included

Order Information

RoHS Compliant

TPMC866-IO-10R Mounting Rail I/O Module, 8 x DB9

For the availability of non-RoHS compliant (lead solder) products please contact TEWS.

Documentation

TPMC866-IO-10-DOC User Manual