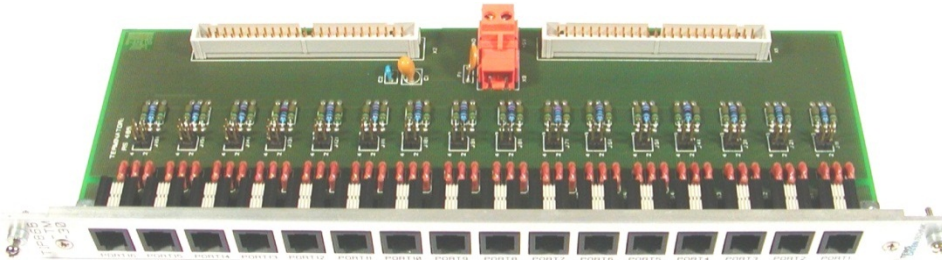
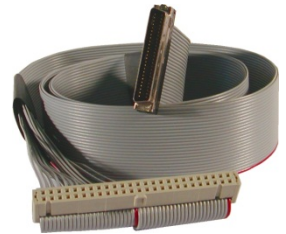


TPMC866-TM-30 Transition Module (16x RJH) for TPMC866



TPMC866-TM-30R



TA105-10R

Application Information

The TPMC866-TM-30R is a high density transition module for the TPMC866 with front panel access.

The TPMC866-TM-30R supports the TPMC866-10R (RS232 interface) and the TPMC866-12R (RS485 HD configuration only). Up to two modules can be connected to one transition module TPMC866-TM-30R.

Sixteen 4 pin RJH connectors are mounted in a 6U 4TE EMV front panel.

The transition module supports TXD, RXD, GND for each set of the eight channels of the TPMC866-10R (RS232) and Dx+/-, GND for the TPMC866-12R (RS485 HD configuration).

On board termination is provided for RS485. Termination can be activated by jumper. A two pin screw terminal (X9) can be used to supply the on board termination for RS485.

Technical Information

- 6U / 4TE EMV front panel
- Sixteen 4 pin RJH connectors mounted in front panel
- Supports front panel I/O versions of the TPMC866-10R/-12R
- RS485 termination selectable by jumper
- +5V / GND by 2 pin terminal block; Power only required to supply on board termination
- Fuse protected by a 1A multi-fuse
- Two TA105-10R, 0.8m ribbon cables with 50 pin ribbon cable connector and 50 pin SCSI-2 male connector, are included

Order Information

RoHS Compliant

TPMC866-TM-30R 16 Channel Transition Module, 4-pin RJ connectors

For the availability of non-RoHS compliant (lead solder) products please contact TEWS.

Documentation

TPMC866-TM-30-DOC User Manual