

# VÉRINS ISO/VDMA RA/8000/M

Double effet - Ø 32 ... 320 mm

Conformes aux normes ISO 15552, ISO6431, VDMA 24562 et NFE 49-003-1

Rendement remarquable, exécution solide et fiable

Large gamme de fixations

## CARACTÉRISTIQUES TECHNIQUES

### Fluide:

Air comprimé, filtré, lubrifié ou non

### Fonctionnement:

Double effet, piston magnétique, amortissement pneumatique réglable

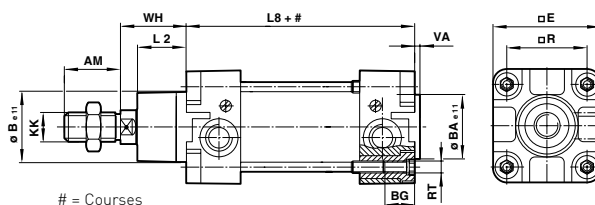
### Pression d'utilisation:

1 ... 16 bar (1 ... 10 bar pour Ø 250 et 320 mm)

### Température de fonctionnement:

-20°C ... +80°C max.

Pour des températures inférieures à +2°C, veuillez nous consulter



# = Courses

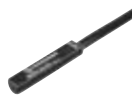
## Dimensions

Dia. Ø	AM	Ø BA/Be11	BG	E	KK	L2	L8	R	RT	VA	WH
32	22	30	18	47	M10x1,25	20	94	32,5	M 6	3	26
40	24	35	18	53	M12x1,25	22	105	38	M 6	3,5	30
50	32	40	18	65	M16x1,5	27	106	46,5	M 8	3,5	37
63	32	45	17,5	75	M16x1,5	29	121	56,5	M 8	4	37
80	40	45	21,5	95	M20x1,5	33	128	72	M 10	4	46
100	40	55	21,5	115	M20x1,5	36	138	89	M 10	4	51
125	54	60	30	140	M27x2	45	160	110	M12	6	65
160	72	65	28,5	183,5	M36x2	58	180	140	M16	4	80
200	72	75	28,5	224	M36x2	67	180	175	M16	5	95
250	84	90	35	280	M42x2	80	200	220	M20	7	105
320	96	110	30	350	M48x2	90	220	270	M24	7	120

## Modèle

## Accessoires

Modèle	Dia. Ø	Courses	Racc.	Tige de piston Ø	Capteur reed avec câble de 5 m	Support de capteur	Limiteur de débit banjo	Raccord droit	Raccord coudé	Kit de maintenance
--------	--------	---------	-------	------------------	--------------------------------	--------------------	-------------------------	---------------	---------------	--------------------



RA/8032/M/25	32	25	G1/8	12	M/50/LSU/5V	QM/27/2/1	C0K510618	C02250618	C02470618	QA/8032/00
RA/8032/M/50	32	50	G1/8	12	M/50/LSU/5V	QM/27/2/1	C0K510618	C02250618	C02470618	QA/8032/00
RA/8032/M/80	32	80	G1/8	12	M/50/LSU/5V	QM/27/2/1	C0K510618	C02250618	C02470618	QA/8032/00
RA/8032/M/100	32	100	G1/8	12	M/50/LSU/5V	QM/27/2/1	C0K510618	C02250618	C02470618	QA/8032/00
RA/8032/M/125	32	125	G1/8	12	M/50/LSU/5V	QM/27/2/1	C0K510618	C02250618	C02470618	QA/8032/00
RA/8032/M/160	32	160	G1/8	12	M/50/LSU/5V	QM/27/2/1	C0K510618	C02250618	C02470618	QA/8032/00
RA/8032/M/200	32	200	G1/8	12	M/50/LSU/5V	QM/27/2/1	C0K510618	C02250618	C02470618	QA/8032/00
RA/8032/M/250	32	250	G1/8	12	M/50/LSU/5V	QM/27/2/1	C0K510618	C02250618	C02470618	QA/8032/00
RA/8032/M/320	32	320	G1/8	12	M/50/LSU/5V	QM/27/2/1	C0K510618	C02250618	C02470618	QA/8032/00
RA/8032/M/400	32	400	G1/8	12	M/50/LSU/5V	QM/27/2/1	C0K510618	C02250618	C02470618	QA/8032/00
RA/8032/M/500	32	500	G1/8	12	M/50/LSU/5V	QM/27/2/1	C0K510618	C02250618	C02470618	QA/8032/00



Pour plus d'information  
www.norgren.com/info/nec/fr038

Si vous ne trouvez pas l'option que vous cherchez...  
...contactez le service d'assistance Express.

## VÉRINS ISO/VDMA RA/8000, RA/8000/M

Double effet – Ø 32 ... 320 mm

## Modèle

## Accessoires

Modèle	Dia. Ø	Courses	Racc.	Tige de piston Ø	Capteur reed avec câble de 5 m	Support de capteur	Limiteur de débit banjo	Raccord droit	Raccord coudé	Kit de maintenance
RA/8040/M/25	40	25	G1/4	16	M/50/LSU/5V	QM/27/2/1	C0K510628	C02250628	C02470628	QA/8040/00
RA/8040/M/50	40	50	G1/4	16	M/50/LSU/5V	QM/27/2/1	C0K510628	C02250628	C02470628	QA/8040/00
RA/8040/M/80	40	80	G1/4	16	M/50/LSU/5V	QM/27/2/1	C0K510628	C02250628	C02470628	QA/8040/00
RA/8040/M/100	40	100	G1/4	16	M/50/LSU/5V	QM/27/2/1	C0K510628	C02250628	C02470628	QA/8040/00
RA/8040/M/125	40	125	G1/4	16	M/50/LSU/5V	QM/27/2/1	C0K510628	C02250628	C02470628	QA/8040/00
RA/8040/M/160	40	160	G1/4	16	M/50/LSU/5V	QM/27/2/1	C0K510628	C02250628	C02470628	QA/8040/00
RA/8040/M/200	40	200	G1/4	16	M/50/LSU/5V	QM/27/2/1	C0K510628	C02250628	C02470628	QA/8040/00
RA/8040/M/250	40	250	G1/4	16	M/50/LSU/5V	QM/27/2/1	C0K510628	C02250628	C02470628	QA/8040/00
RA/8040/M/320	40	320	G1/4	16	M/50/LSU/5V	QM/27/2/1	C0K510628	C02250628	C02470628	QA/8040/00
RA/8040/M/400	40	400	G1/4	16	M/50/LSU/5V	QM/27/2/1	C0K510628	C02250628	C02470628	QA/8040/00
RA/8040/M/500	40	500	G1/4	16	M/50/LSU/5V	QM/27/2/1	C0K510628	C02250628	C02470628	QA/8040/00
RA/8050/M/25	50	25	G1/4	20	M/50/LSU/5V	QM/27/2/1	C0K510828	C02250828	C02470828	QA/8050/00
RA/8050/M/50	50	50	G1/4	20	M/50/LSU/5V	QM/27/2/1	C0K510828	C02250828	C02470828	QA/8050/00
RA/8050/M/80	50	80	G1/4	20	M/50/LSU/5V	QM/27/2/1	C0K510828	C02250828	C02470828	QA/8050/00
RA/8050/M/100	50	100	G1/4	20	M/50/LSU/5V	QM/27/2/1	C0K510828	C02250828	C02470828	QA/8050/00
RA/8050/M/125	50	125	G1/4	20	M/50/LSU/5V	QM/27/2/1	C0K510828	C02250828	C02470828	QA/8050/00
RA/8050/M/160	50	160	G1/4	20	M/50/LSU/5V	QM/27/2/1	C0K510828	C02250828	C02470828	QA/8050/00
RA/8050/M/200	50	200	G1/4	20	M/50/LSU/5V	QM/27/2/1	C0K510828	C02250828	C02470828	QA/8050/00
RA/8050/M/250	50	250	G1/4	20	M/50/LSU/5V	QM/27/2/1	C0K510828	C02250828	C02470828	QA/8050/00
RA/8050/M/320	50	320	G1/4	20	M/50/LSU/5V	QM/27/2/1	C0K510828	C02250828	C02470828	QA/8050/00
RA/8050/M/400	50	400	G1/4	20	M/50/LSU/5V	QM/27/2/1	C0K510828	C02250828	C02470828	QA/8050/00
RA/8050/M/500	50	500	G1/4	20	M/50/LSU/5V	QM/27/2/1	C0K510828	C02250828	C02470828	QA/8050/00
RA/8063/M/25	63	25	G3/8	20	M/50/LSU/5V	QM/27/2/1	C0K510838	C02250838	C02470838	QA/8063/00
RA/8063/M/50	63	50	G3/8	20	M/50/LSU/5V	QM/27/2/1	C0K510838	C02250838	C02470838	QA/8063/00
RA/8063/M/80	63	80	G3/8	20	M/50/LSU/5V	QM/27/2/1	C0K510838	C02250838	C02470838	QA/8063/00
RA/8063/M/100	63	100	G3/8	20	M/50/LSU/5V	QM/27/2/1	C0K510838	C02250838	C02470838	QA/8063/00
RA/8063/M/125	63	125	G3/8	20	M/50/LSU/5V	QM/27/2/1	C0K510838	C02250838	C02470838	QA/8063/00
RA/8063/M/160	63	160	G3/8	20	M/50/LSU/5V	QM/27/2/1	C0K510838	C02250838	C02470838	QA/8063/00
RA/8063/M/200	63	200	G3/8	20	M/50/LSU/5V	QM/27/2/1	C0K510838	C02250838	C02470838	QA/8063/00
RA/8063/M/250	63	250	G3/8	20	M/50/LSU/5V	QM/27/2/1	C0K510838	C02250838	C02470838	QA/8063/00
RA/8063/M/320	63	320	G3/8	20	M/50/LSU/5V	QM/27/2/1	C0K510838	C02250838	C02470838	QA/8063/00
RA/8063/M/400	63	400	G3/8	20	M/50/LSU/5V	QM/27/2/1	C0K510838	C02250838	C02470838	QA/8063/00
RA/8063/M/500	63	500	G3/8	20	M/50/LSU/5V	QM/27/2/1	C0K510838	C02250838	C02470838	QA/8063/00
RA/8080/M/25	80	25	G3/8	25	M/50/LSU/5V	QM/27/2/1	C0K511038	C02251038	C02471038	QA/8080/00
RA/8080/M/50	80	50	G3/8	25	M/50/LSU/5V	QM/27/2/1	C0K511038	C02251038	C02471038	QA/8080/00
RA/8080/M/80	80	80	G3/8	25	M/50/LSU/5V	QM/27/2/1	C0K511038	C02251038	C02471038	QA/8080/00
RA/8080/M/100	80	100	G3/8	25	M/50/LSU/5V	QM/27/2/1	C0K511038	C02251038	C02471038	QA/8080/00
RA/8080/M/125	80	125	G3/8	25	M/50/LSU/5V	QM/27/2/1	C0K511038	C02251038	C02471038	QA/8080/00
RA/8080/M/160	80	160	G3/8	25	M/50/LSU/5V	QM/27/2/1	C0K511038	C02251038	C02471038	QA/8080/00
RA/8080/M/200	80	200	G3/8	25	M/50/LSU/5V	QM/27/2/1	C0K511038	C02251038	C02471038	QA/8080/00
RA/8080/M/250	80	250	G3/8	25	M/50/LSU/5V	QM/27/2/1	C0K511038	C02251038	C02471038	QA/8080/00
RA/8080/M/320	80	320	G3/8	25	M/50/LSU/5V	QM/27/2/1	C0K511038	C02251038	C02471038	QA/8080/00
RA/8080/M/400	80	400	G3/8	25	M/50/LSU/5V	QM/27/2/1	C0K511038	C02251038	C02471038	QA/8080/00
RA/8080/M/500	80	500	G3/8	25	M/50/LSU/5V	QM/27/2/1	C0K511038	C02251038	C02471038	QA/8080/00
RA/8100/M/50	100	50	G1/2	25	M/50/LSU/5V	QM/27/2/1	C0K511248	C02251248	C02471248	QA/8100/00
RA/8100/M/80	100	80	G1/2	25	M/50/LSU/5V	QM/27/2/1	C0K511248	C02251248	C02471248	QA/8100/00
RA/8100/M/100	100	100	G1/2	25	M/50/LSU/5V	QM/27/2/1	C0K511248	C02251248	C02471248	QA/8100/00
RA/8100/M/125	100	125	G1/2	25	M/50/LSU/5V	QM/27/2/1	C0K511248	C02251248	C02471248	QA/8100/00
RA/8100/M/160	100	160	G1/2	25	M/50/LSU/5V	QM/27/2/1	C0K511248	C02251248	C02471248	QA/8100/00
RA/8100/M/200	100	200	G1/2	25	M/50/LSU/5V	QM/27/2/1	C0K511248	C02251248	C02471248	QA/8100/00
RA/8100/M/250	100	250	G1/2	25	M/50/LSU/5V	QM/27/2/1	C0K511248	C02251248	C02471248	QA/8100/00
RA/8100/M/320	100	320	G1/2	25	M/50/LSU/5V	QM/27/2/1	C0K511248	C02251248	C02471248	QA/8100/00
RA/8100/M/400	100	400	G1/2	25	M/50/LSU/5V	QM/27/2/1	C0K511248	C02251248	C02471248	QA/8100/00
RA/8100/M/500	100	500	G1/2	25	M/50/LSU/5V	QM/27/2/1	C0K511248	C02251248	C02471248	QA/8100/00

Si vous ne trouvez pas l'option que vous cherchez...  
...contactez le service d'assistance Express.

# VÉRINS ISO/VDMA RA/8000/M

Double effet – Ø 32 ... 320 mm

## Modèle

## Accessoires

Modèle	Dia. Ø	Courses	Racc.	Tige de piston Ø	Capteur reed avec câble de 5 m	Support de capteur	Limiteur de débit banjo	Raccord droit	Raccord coudé	Kit de maintenance
RA/8125/M/250	125	250	G1/2	32	M/50/LSU/5V	QM/27/2/1	C0K511248	C02251248	C02471248	QA/8125/00
RA/8125/M/320	125	320	G1/2	32	M/50/LSU/5V	QM/27/2/1	C0K511248	C02251248	C02471248	QA/8125/00
RA/8125/M/400	125	400	G1/2	32	M/50/LSU/5V	QM/27/2/1	C0K511248	C02251248	C02471248	QA/8125/00
RA/8125/M/500	125	500	G1/2	32	M/50/LSU/5V	QM/27/2/1	C0K511248	C02251248	C02471248	QA/8125/00
RA/8160/M/250	160	250	G3/4	40	M/50/LSU/5V	QM/27/2/1	M/840 (En ligne)	-	-	QA/8160/00
RA/8160/M/320	160	320	G3/4	40	M/50/LSU/5V	QM/27/2/1	M/840 (En ligne)	-	-	QA/8160/00
RA/8160/M/400	160	400	G3/4	40	M/50/LSU/5V	QM/27/2/1	M/840 (En ligne)	-	-	QA/8160/00
RA/8160/M/500	160	500	G3/4	40	M/50/LSU/5V	QM/27/2/1	M/840 (En ligne)	-	-	QA/8160/00
RA/8200/M/***	200	Suivant la demande	G3/4	40	M/50/LSU/5V	QM/27/2/1	M/840 (En ligne)	-	-	QA/8200/00
RA/8250/M/***	250	Suivant la demande	G1	50	QM/32/5	QM/31/250/22	M/855 (En ligne)	-	-	QA/8250/00
RA/8320/M/***	320	Suivant la demande	G1	63	QM/32/5	QM/31/320/22	M/855 (En ligne)	-	-	QA/8320/00

\*\*\* Indiquez la longueur de la course en mm

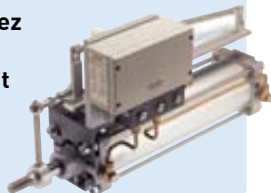
Pour connaître les autres longueurs de course disponibles, nous consulter.

Pour des informations sur d'autres capteurs magnétiques, voir la page 58

## EXPRESS PLUS

Vous recherchez un système de positionnement des vérins?

Contactez nous.



## ÉQUIVALENCE NORGREN

Si vous recherchez la fiabilité alliée à d'excellentes performances, choisissez Norgren. Des milliers de produits et d'accessoires prêts à être livrés immédiatement.

Utilisez cette gamme de vérins ISO pour remplacer les produits suivants

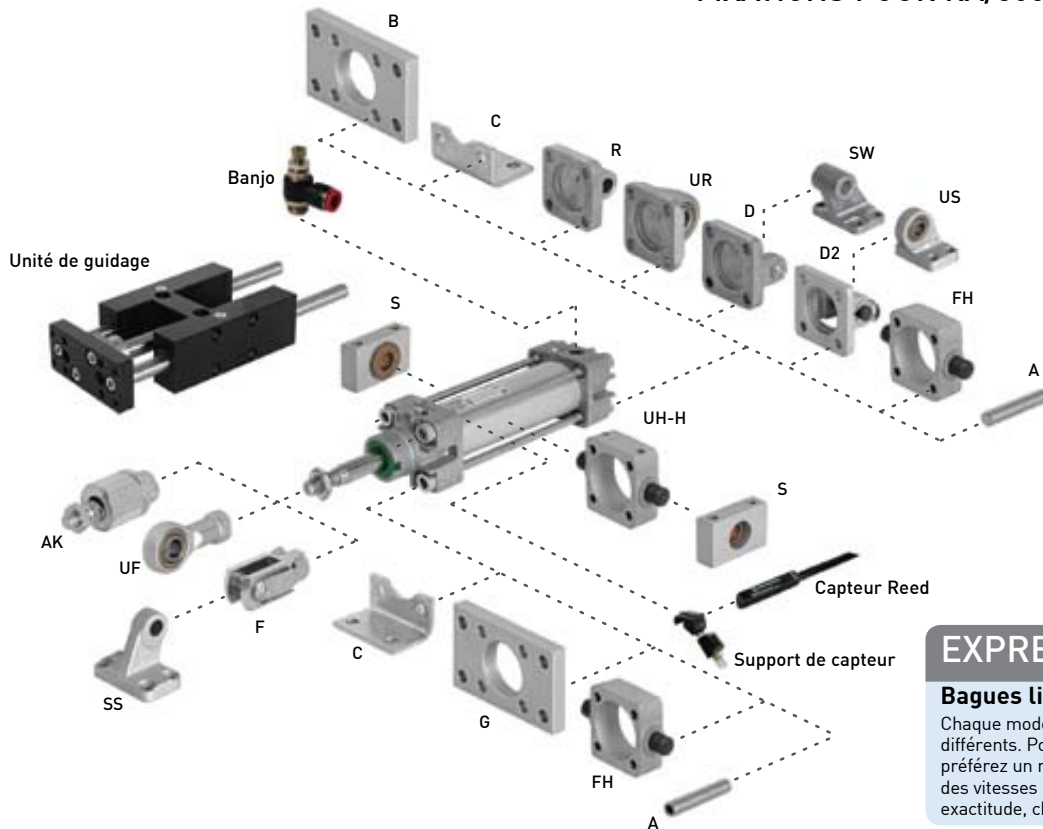
- Gamme Festo DNCB et DNG
- Gamme Parker P1D
- Gamme SMC C95 et CP95
- Gamme Bosch Rexroth PRA

Pour des informations complémentaires, appelez nous.

- ✓ Venez chez Norgren
- ✓ Toujours en stock
- ✓ Livraison rapide
- ✓ Garantie gratuite – 2 ans

Si vous ne trouvez pas l'option que vous cherchez...  
...contactez le service d'assistance Express.

## FIXATIONS POUR RA/8000/M Vérins ISO/VDMA



## EXPRESS PLUS

## Bagues lisses et guidages à billes...

Chaque modèle comporte des avantages différents. Pour les lourdes charges latérales, préférez un modèle à bagues lisses, pour obtenir des vitesses plus élevées et une plus grande exactitude, choisissez un guidage à billes.

Dia. Ø	A	AK	B, G	C	D	D2	F	FH	H
32	QM/8032/35	QM/8025/38	QA/8032/22	QA/8032/21	QA/8032/23	QA/8032/42	QM/8025/25	QA/8032/34	QA/8032/28
40	QM/8032/35	QM/8040/38	QA/8040/22	QA/8040/21	QA/8040/23	QA/8040/42	QM/8040/25	QA/8040/34	QA/8040/28
50	QM/8050/35	QM/8050/38	QA/8050/22	QA/8050/21	QA/8050/23	QA/8050/42	QM/8050/25	QA/8050/34	QA/8050/28
63	QM/8050/35	QM/8050/38	QA/8063/22	QA/8063/21	QA/8063/23	QA/8063/42	QM/8050/25	QA/8063/34	QA/8063/28
80	QM/8080/35	QM/8080/38	QA/8080/22	QA/8080/21	QA/8080/23	QA/8080/42	QM/8080/25	QA/8080/34	QA/8080/28
100	QM/8080/35	QM/8080/38	QA/8100/22	QA/8100/21	QA/8100/23	QA/8100/42	QM/8080/25	QA/8100/34	QA/8100/28
125	QM/8125/35	QM/8125/38	QM/8125/22	QM/8125/21	QM/8125/23	QA/8125/42	QM/8125/25	QA/8125/34	QM/8125/28
160	QM/8160/35	QM/8160/38	QM/8160/22	QM/8160/21	QM/8160/23	QA/8160/42	QM/8160/25	-	QM/8160/28
200	QM/8160/35	QM/8160/38	QM/8200/22	QM/8200/21	QM/8200/23	QA/8200/42	QM/8160/25	-	QM/8200/28
250	QM/8250/35	-	QM/8250/22	QM/8250/21	QM/8250/23	-	QM/8250/25	-	QM/8250/28
320	QM/8320/35	-	QM/8320/22	QM/8320/21	QM/8320/23	-	QM/8320/25	-	QM/8320/28

Dia. Ø	R	S	SS	SW	UF	UH	UR	US
32	QA/8032/27	QA/8032/41	M/P19931	M/P19493	QM/8025/32	QA/8032/40	QA/8032/33	M/P40310
40	QA/8040/27	QA/8040/41	M/P19932	M/P19494	QM/8040/32	QA/8040/40	QA/8040/33	M/P40311
50	QA/8050/27	QA/8040/41	M/P19933	M/P19495	QM/8050/32	QA/8050/40	QA/8050/33	M/P40312
63	QA/8063/27	QA/8063/41	M/P19934	M/P19496	QM/8050/32	QA/8063/40	QA/8063/33	M/P40313
80	QA/8080/27	QA/8063/41	M/P19935	QA/8100/40	QM/8080/32	QA/8080/40	QA/8080/33	M/P40314
100	QA/8100/27	QA/8100/41	M/P19936	M/P19498	QM/8080/32	QA/8100/40	QA/8100/33	M/P40315
125	QM/8125/27	QA/8100/41	M/P19937	M/P19499	QM/8125/32	QA/8125/40	QM/8125/33	M/P71355
160	QM/8160/27	QA/8160/41	M/P19938	M/P19679	QM/8160/32	QA/8160/40	QM/8160/33	M/P71356
200	QM/8200/27	QA/8160/41	M/P19939	M/P19683	QM/8160/32	QA/8200/40	QM/8200/33	M/P71357
250	-	-	-	M/P19446	QM/8250/32	-	QM/8250/33	-
320	-	-	-	M/P19447	QM/8320/32	-	QM/8320/33	-

## Courses standard des unités de guidage

Ø	Unité de guidage	Unité de guidage
32	QA/8032/51*	QA/8032/61*
40	QA/8040/51*	QA/8040/61*
50	QA/8050/51*	QA/8050/61*
63	QA/8063/51*	QA/8063/61*
80	QA/8080/51*	QA/8080/61*
100	QA/8100/51*	QA/8100/61*

Ø	50	100	160	200	250	320	400	500
32	•	•	•	•	•	•	•	•
40	•	•	•	•	•	•	•	•
50	•	•	•	•	•	•	•	•
63	•	•	•	•	•	•	•	•
80	•	•	•	•	•	•	•	•
100	•	•	•	•	•	•	•	•

\* Indiquer la course en mm. d'après tableau de droite.

Note: QA/8\_\_\_/51\* = Bagues lisses.

QA/8\_\_\_/61\* = Guidage à billes.

Autres courses non disponibles, utilisez la course la plus proche d'une course standard.  
Course maximum 500 mm.

**Si vous ne trouvez pas l'option que vous cherchez...  
...contactez le service d'assistance Express.**

**Vous ne trouvez pas - Contactez l'équipe Express**